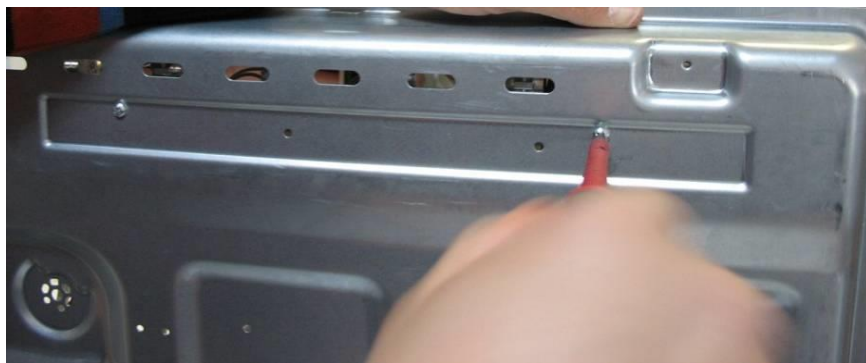


HOBS SERVICE MANUAL CONTENTS

1. Gas Manifold and Valves	2
2. Burner Body	6
3. Thermocouple (For FFD Hobs)	8
4. Microswitch	9
5. Ignitor Box	10
6. Spark Plug	11
7. Wiring Harness (Electric Hobs)	12
8. Hot Surface Indicator Light	15
9. Induction Hob – Disassemble	16
10. Induction Heating Element & Touch Control Unit	17
11. Terminal Connection	18
12. Induction Hob Errors and Display Errors	19

CHANGING GAS MANIFOLD AND VALVES

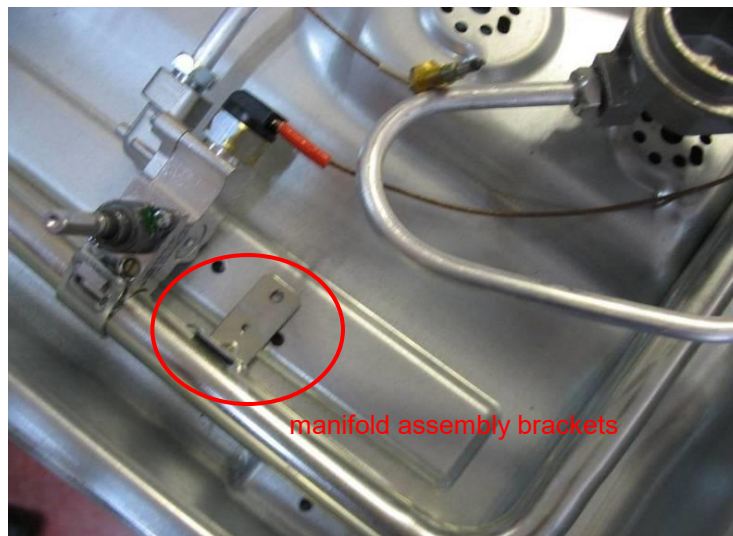
Unscrew the manifold fixing screws under the bottom cover of hob.



The manifold assembly brackets are free then.



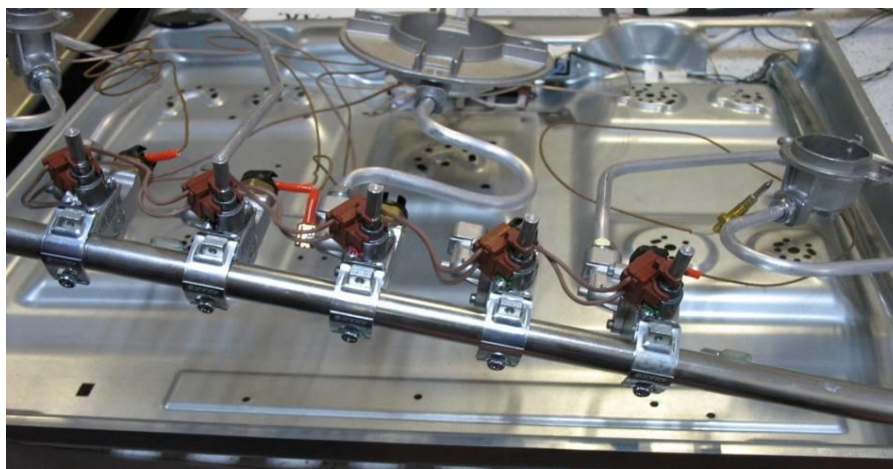
HOBS SERVICE MANUAL



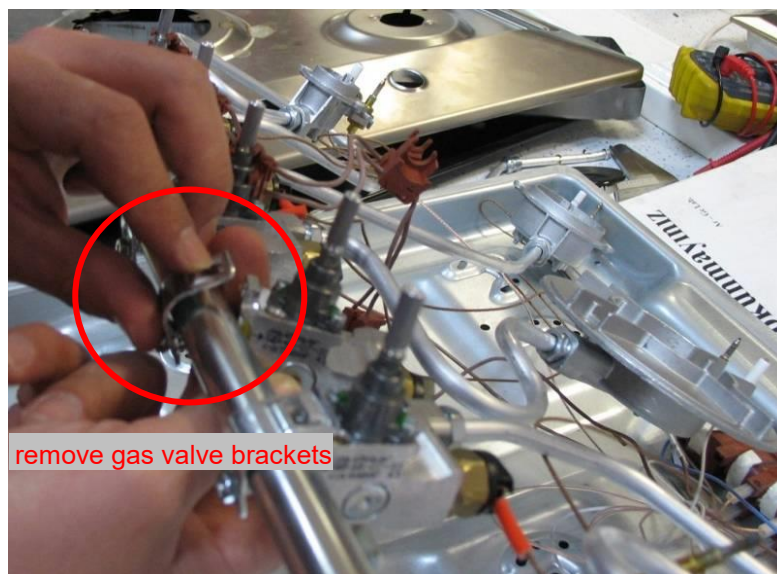
Unscrew all burner connections on the bottom cover.



Unscrew all gas valve brackets from the manifold.



HOBS SERVICE MANUAL



The manifold is free to change.

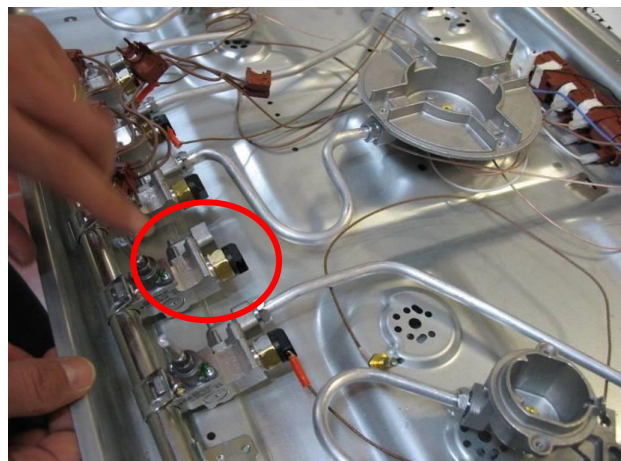
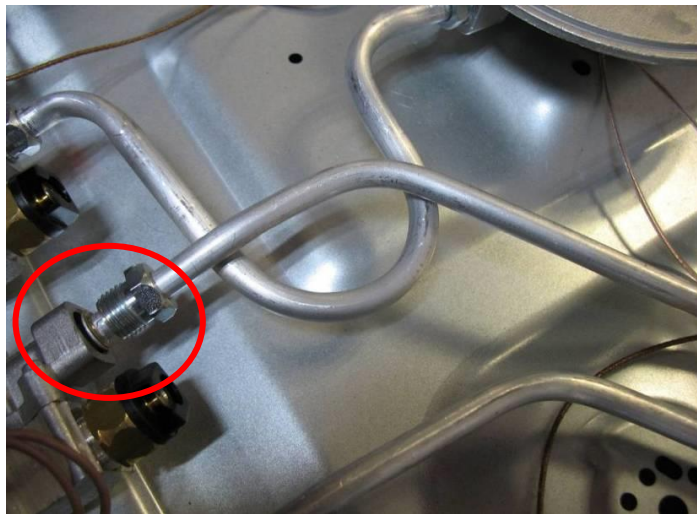
In order to change gas valves ;

Do all above mentioned procedure and follow the below steps:

Take off the microswitches from the valves (for knob-controlled hobs only)



Remove gas delivery pipe from the gas valve.



The gas valve is free to change.

*** Reassemble the gas valves in their correct order**

*** Detect gas leak after reassembly !**

HOBS SERVICE MANUAL

Changing Burner Body

Firstly, unscrew the burner body connection on the bottom cover.



Then remove cooktop.

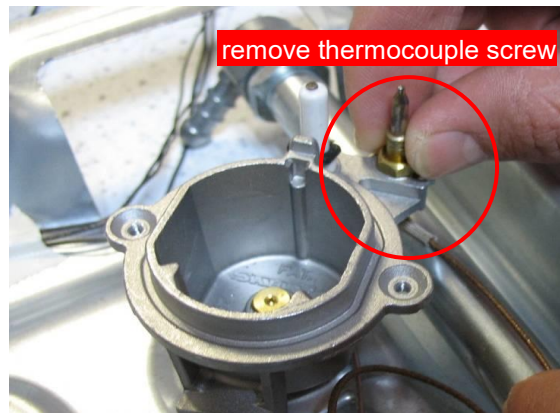


Unscrew the gas delivery pipe connection nut (with a wrench no:13)

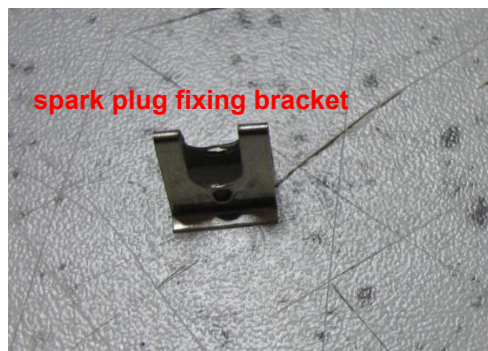


For a FFD hob;

Unscrew the thermocouple from the burner body (with a wrench no: 8)



Press the spark plug segment and press the fixing bracket at bottom.



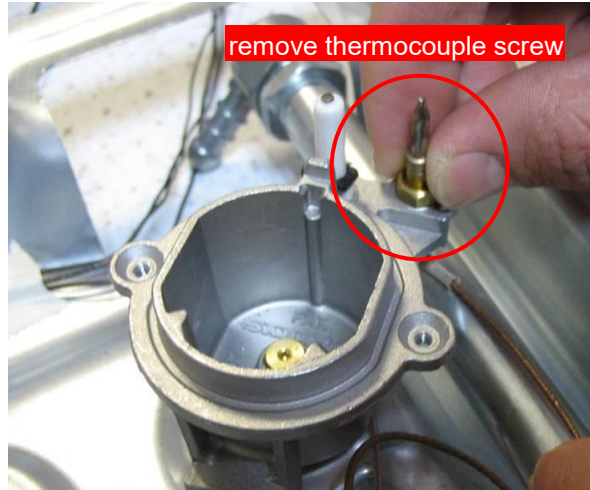
Hold the spark plug up and remove.



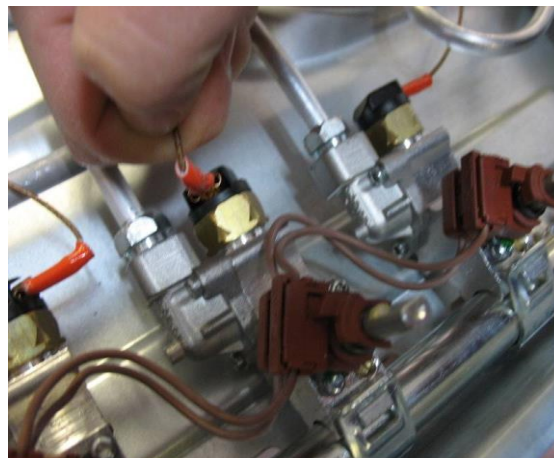
Changing Thermocouple (For FFD Hobs)

Remove the cooktop.

Unscrew the thermocouple from the burner body (with a wrench no:8)



Pull off the gas valve end of ffd connection.



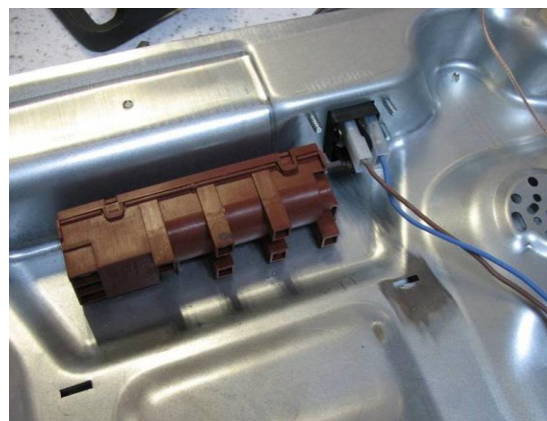
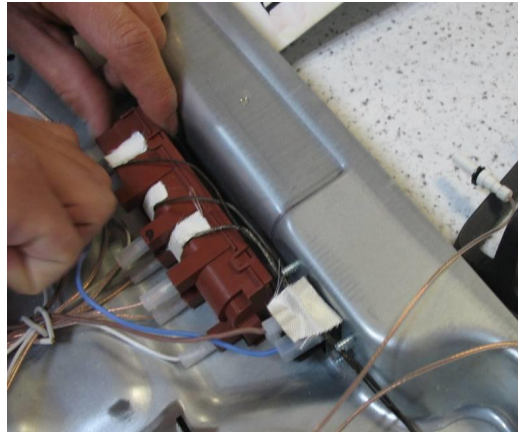
Repeat the same procedure backwards for assembling a new FFD.

Changing Microswitch*

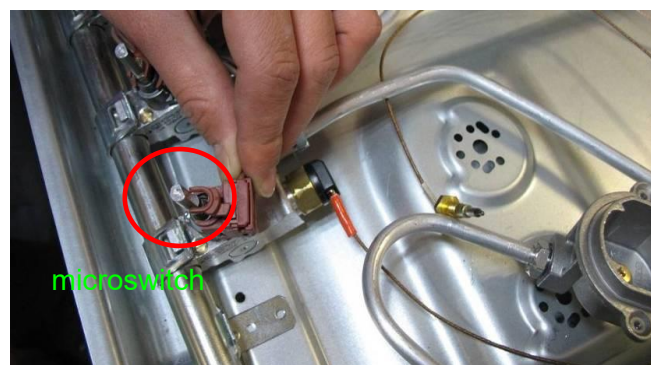
*For knob-controlled hobs

Remove the cooktop.

Take off the microswitch terminal contacts from the ignitor box.



Remove the microswitch on the gas valve.



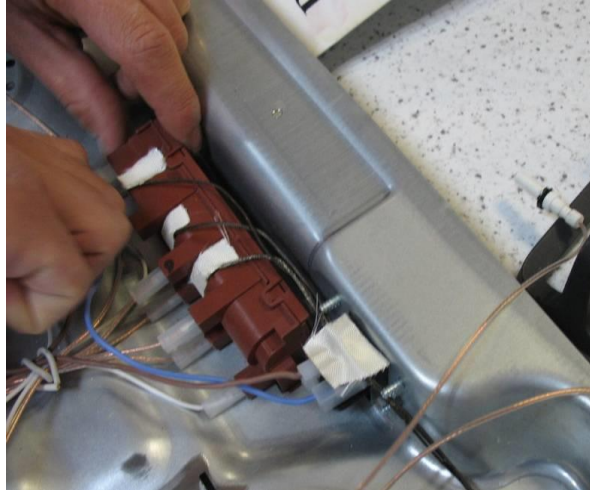
Microswitches are together a total group with its wiring.

So you have to remove all microswitches to change any of them.

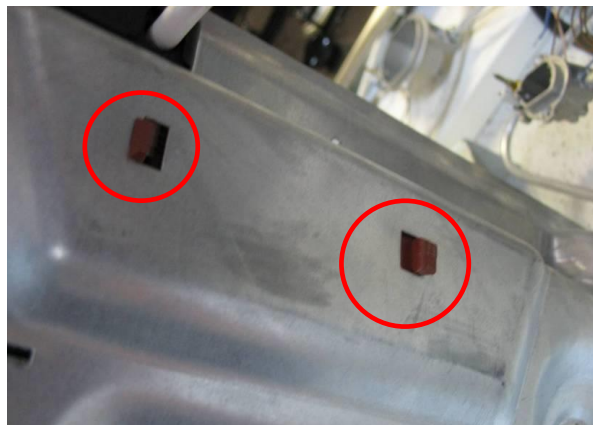
Changing the Ignitor Box

Remove the cooktop.

Remove all cable contacts from the ignitor box.



Press the hooks (at bottom cover) of ignitor box and remove.



You may change it with a new one.

Attention:

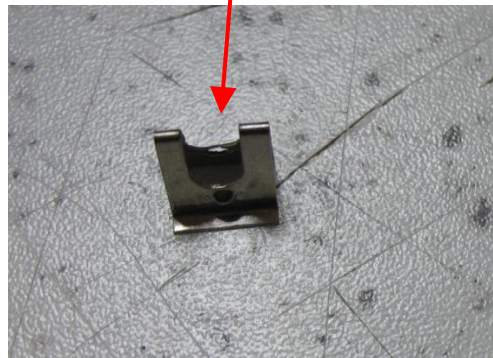
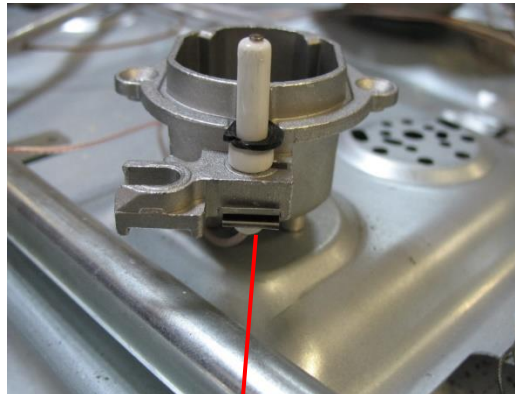
For 5 gas burner hobs; Ignitor earthing cable must be connected on the ignitor box. Please check before use. Otherwise, one of the burners will not light.



Changing the Spark Plug

Remove the cooktop.

Press the spark plug segment and press the fixing bracket at bottom.



Hold the spark plug up and remove. (The spark plug must be removed with its cable.)



Take off the spark plug terminal connection on the ignitor box.

Please apply this procedure backwards to assemble a new one.

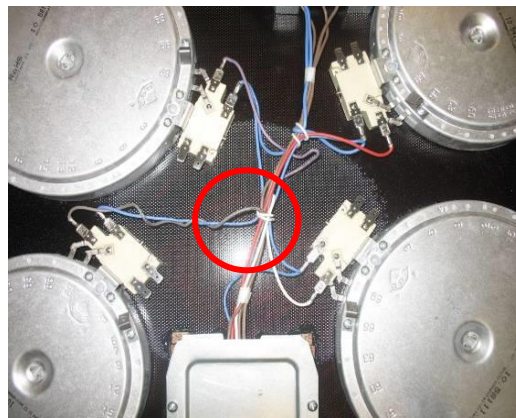
HOBS SERVICE MANUAL

Removing Wiring Harness (Electric Hobs)

Unscrew the hob bottom cover.



Loosen the silicone cable – to release the wiring harness.



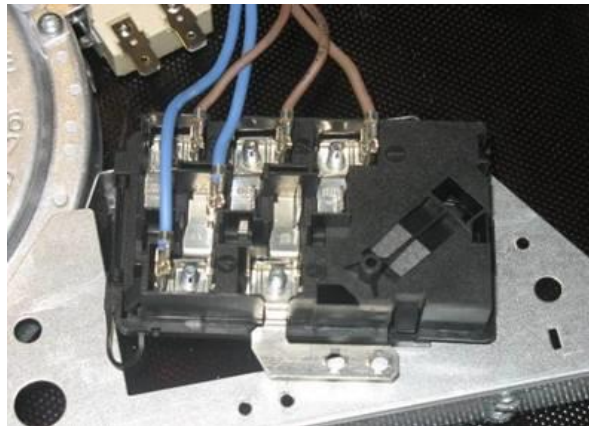
HOBS SERVICE MANUAL

Unscrew the terminal box and remove.

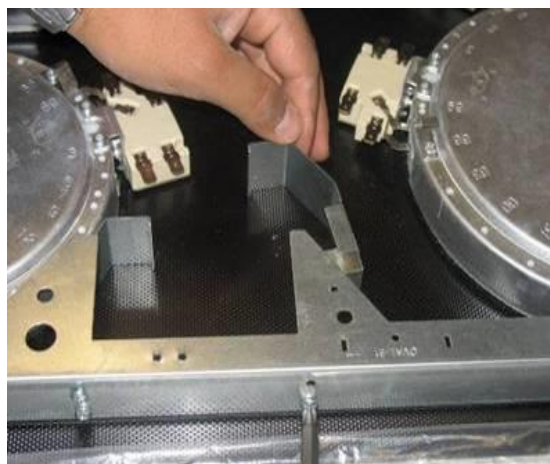


Pull the wiring sockets off terminal box.

Please do not forget that rewiring must be done appropriately.

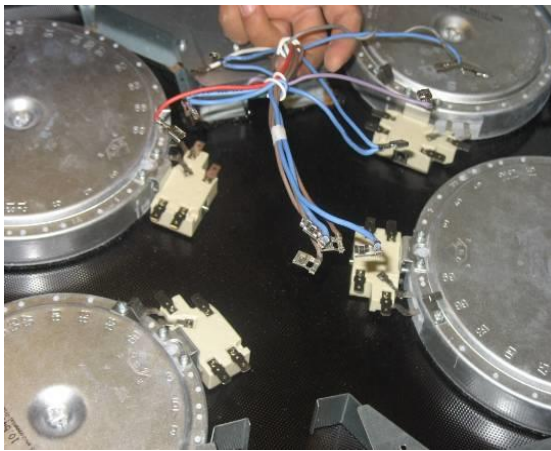
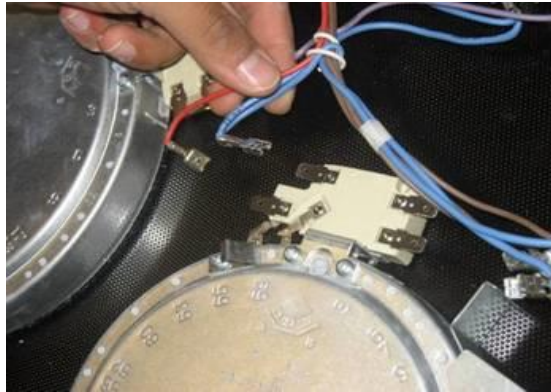


Remove terminal box heat insulating cover.

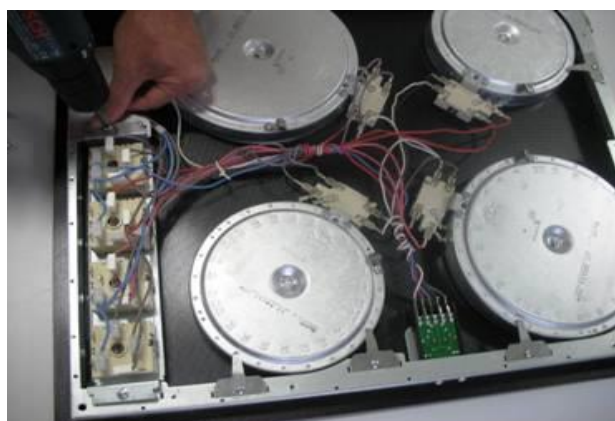


HOBS SERVICE MANUAL

Take the wiring terminals off the heating elements.

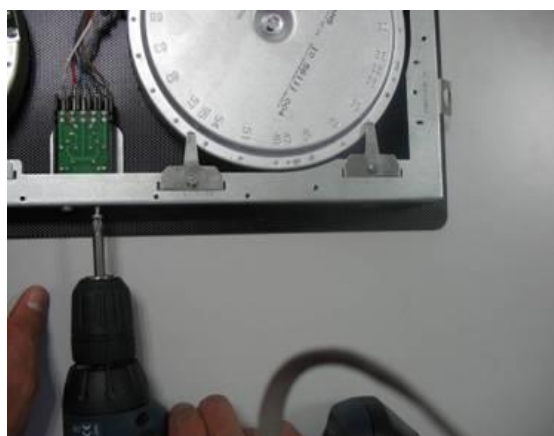


Unscrew the regulator cover and then remove the regler.



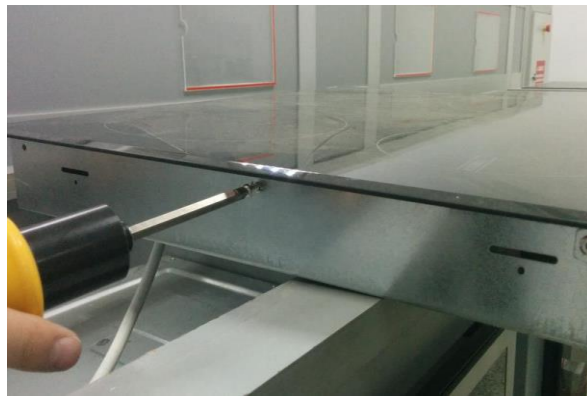
Remove the hot surface indicator light group.

Wiring connections are free.

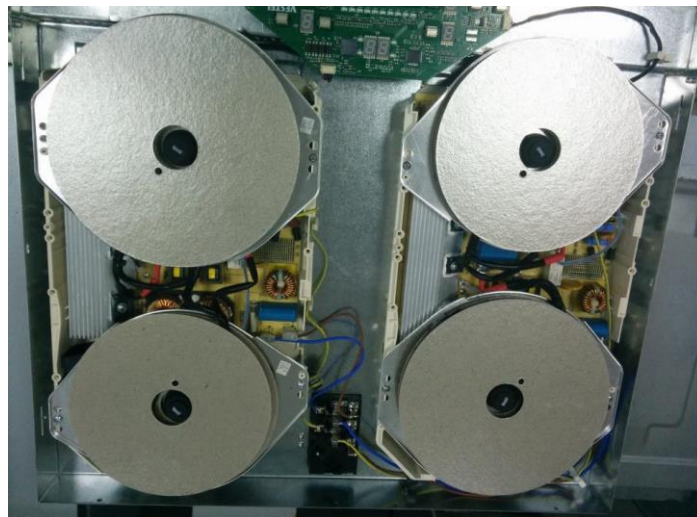


Disassemble The Induction Hob

Unscrew all surrounding screws of the hob.



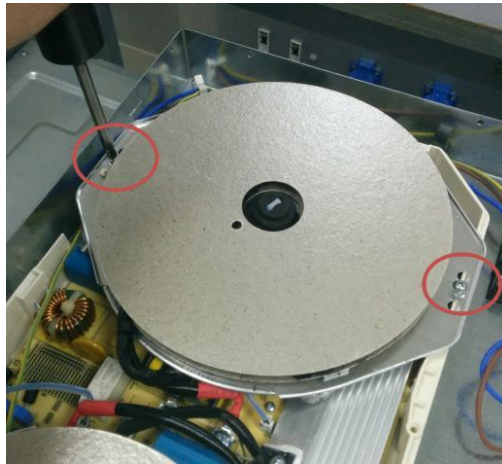
Inside of Induction Hob



HOBS SERVICE MANUAL

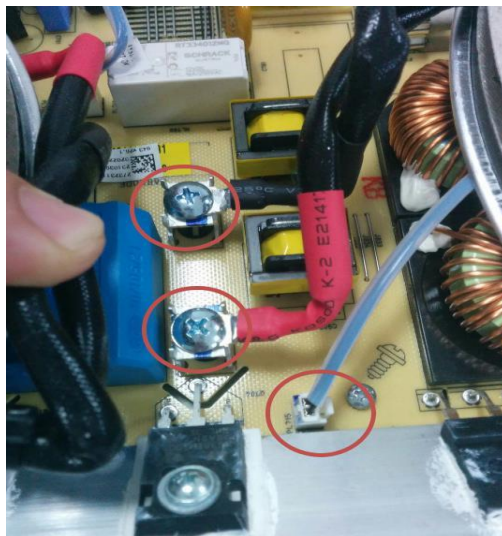
Changing Heating Element (IHE) & Touch Control Unit

Unscrew holder screws of IHE:



Pull off terminal connections on the heating element.

Remove heating element and change with another one if necessary.



To change the touch control unit: remove connected wirings.

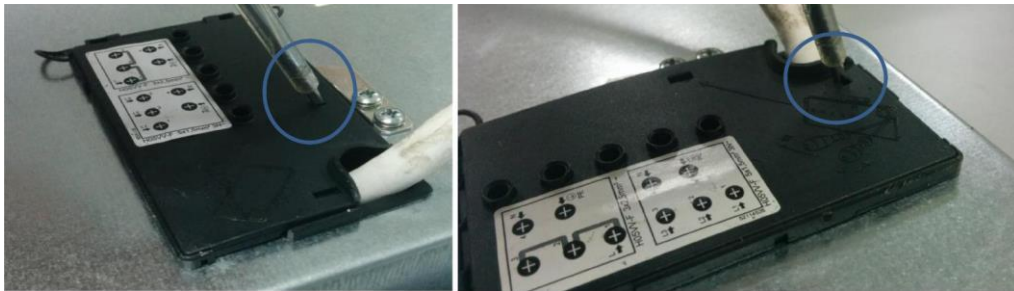


Terminal Connection

There is a circuit diagram on terminal box.



Press on the hooks of connection unit for opening terminal box.



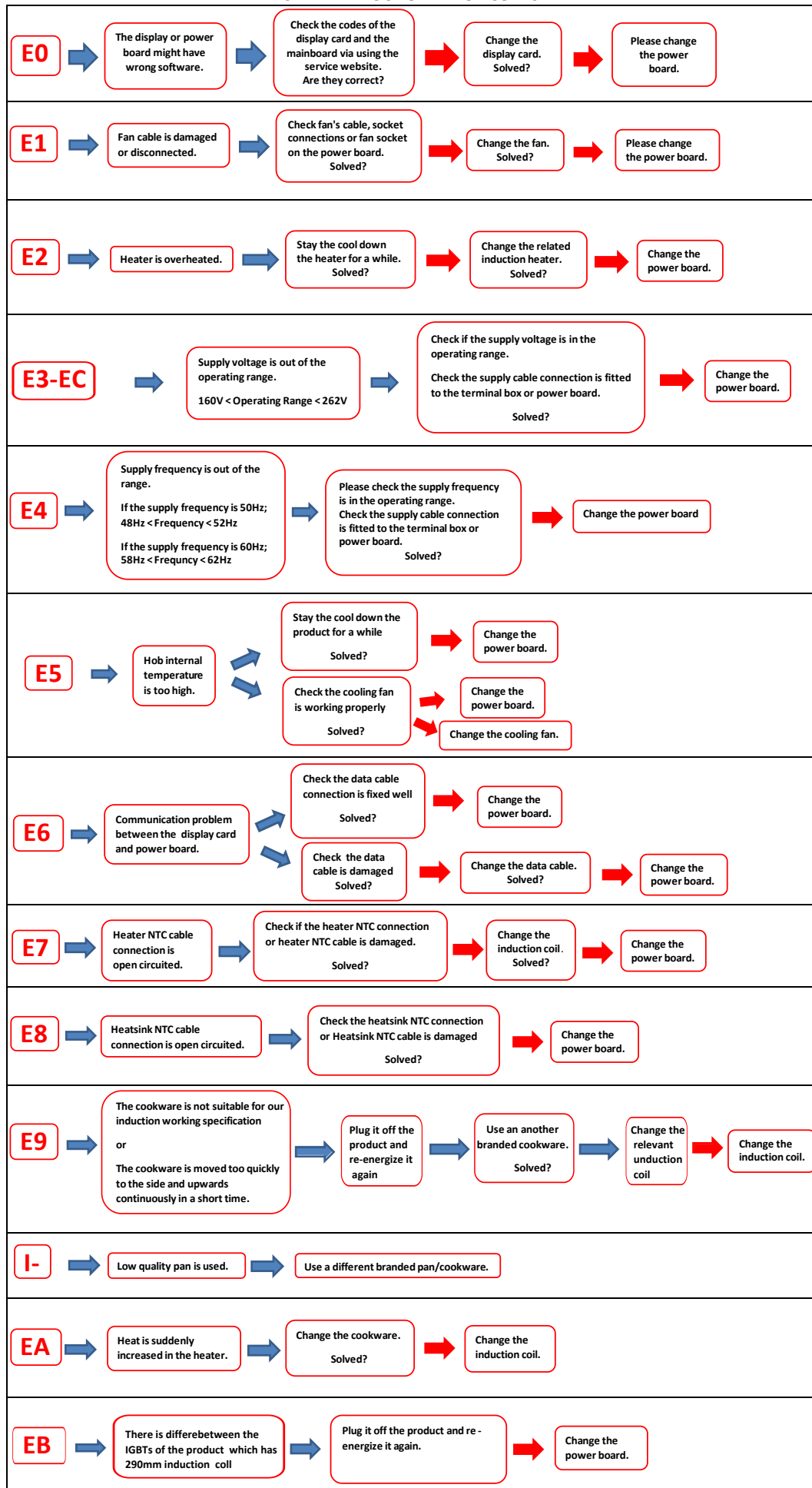
Check wiring or change according to sticker on terminal box



P.S. While reassembling please refer to circuit diagrams

HOBS SERVICE MANUAL

SERIE 2 INDUCTION ERROR CODES



HOBS SERVICE MANUAL

SERIE 2 INDUCTION ERROR CODES

